



Jefferson County Environmental Community Resource Booklet



Alabama
Environmental
Council



Agency Name:

City of Bessemer Stormwater Management

Mission Statement:

The City of Bessemer Stormwater Management strives to bring an enhanced quality of life for the citizens of Bessemer through environmental education and stewardship by promoting responsible use and protection of the natural environment.



What services does your agency provide?

Environmental Education Seminars, Water Quality Monitoring, Spill and Illicit Discharge Investigations, Construction Site BMP Inspections and Cooking Oil and Grease Recycling.

Who benefits from the programs and services of your division?

The program is designed to bring a better quality of life to the citizens of the City of Bessemer through environmental stewardship.



Contact Information:

Freddie Freeman

Storm Water Specialist

City of Bessemer, Building and Inspections Department

City of Bessemer

1700 Third Avenue North

Bessemer, AL 35020

Phone: 205.424.4060, ext. 4188

Website: <http://www.bessemeral.org/>



Jefferson County Environmental Community Resource Booklet

Agency Name:

City of Birmingham Stormwater Management

Mission Statement:

The Watershed Management Team strives to bring an enhanced quality of life through services and partnerships that promote a quality environment and economic development opportunities.

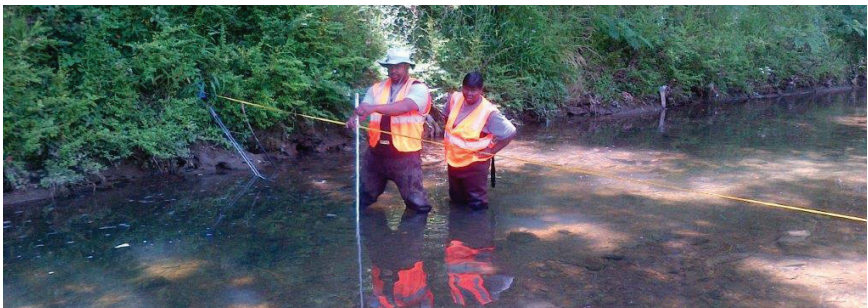


What services does your agency provide?

We work as a city municipality as leaders of stormwater protection. Our duty is to serve and educate the citizens by meeting National Pollutant Discharge Elimination System (NPDES) regulations, eliminating stormwater related issues, and creating a better quality of life for the Citizens of Birmingham.

Who benefits from the programs and services of your division?

The Citizens of Birmingham, downstream communities, and regional partners benefit from our programs and services.



Contact Information:

Thomas Miller

Stormwater Administrator

Phone: (205) 714-8644

Fax: (205) 254-2925

E-mail: thomas.miller@birminghamal.gov

Website: birminghamal.gov/storm-water-about



Agency Name:

Keep Birmingham Beautiful

Mission Statement:

To serve the citizens of Birmingham by developing and implementing effective public environmental education and community improvement programs.



To promote environmental awareness, promote recycling and partner with agencies to implement effective community related projects.

What services does your agency provide?

KBB can help neighborhoods to plan their clean-up projects. Promote residential recycling in the schools and promote the maintenance of clean school campuses. KBB also works with other agencies completing community projects. KBB loans equipment, such as tillers, needed to create community gardens, and provide tools, garbage bags needed for clean-up projects. FREE Recycling Services are provided by the City of Birmingham on Wednesday at 6:00 a.m. Garbage Collection Services for disabled or elderly that need assistance can call 311 or (205) 254-6314.

Who benefits from the programs and services of your division?

The communities, general public and schools in the City of Birmingham.

Contact Information:

Phone: (205) 787-5222

Fax: (205) 780-4130

E-mail: SadeC.McClaney@birminghamal.gov

Website: Like KBB on Facebook



Agency Name:

Alabama Environmental Council

Mission Statement:

Our mission is to Preserve and Protect Alabama's Natural Capital, Unify Information and Action for Healthier People and Places, and Promote Economic Growth through Green Business.



**Alabama
Environmental
Council**

What services does your agency provide?

Tours : Get a behind-the-scenes look at how our recycling center is operated, along with an overview of the recycling process itself. Contact us at programs@aeconline.org to arrange a tour.

Events: Rent an Event Recycling Kit for your special events, enabling your visitors to recycle items on-site. Fees are assessed by the size of the event.

Education: Let our friendly staff share their knowledge of the world of recycling, from learning about accepted materials to setting up an at-home recycling station.

Who benefits from the programs and services of your division?

AEC promotes “green” jobs and businesses, and advocates for growth of environmentally-sound companies within our state. With services such as Recycle Alabama, we serve Alabama as a leader in recycling program development and advocate for reduced landfill use. AEC also aims to bring people, groups, and information together, building strength on strength toward a healthier living environment.

Contact Information:

Email: felicia@aeconline.org ; recycling@aeconline.org ;
programs@aeconline.org

Website: aeconline.org ; recycal.org



Agency Name:

Jefferson County Environmental Services Household Cooking Oil and Grease Recycling Program

Mission Statement:

To encourage recycling of household cooking oil and grease for the residents of Jefferson County.



Services:

We provide a free recycling program to promote the health and maintenance of our sewer system to decrease blockages caused by the improper disposal of oil and grease from the kitchen.

Who benefits from the programs and services of your division?

All county residents benefit from well-maintained sewer system with fewer blockages and consistent maximum flow in the sewer lines.

Contact Information:

Phone: (205) 238-3877

Fax: (205) 940-7295

E-mail: greasecontrol@jccal.org

Website: jeffcoes.org



Agency Name:

Alabama Cooperative Extension System Jefferson County Office

Mission Statement:

The Alabama
Cooperative Extension
System, the primary



outreach organization for the land-grant mission of Alabama A&M University and Auburn University, delivers research-based educational programs that enable people to improve their quality of life and economic well-being.

The Alabama Cooperative Extension System provides educational opportunities and information grounded in research-based science.

What services does your agency provide?

Programs and information on agriculture, family and consumer science, 4-H and youth development, wildlife, forestry, natural resources, economic and community development, and urban affairs.

Who benefits from the programs and services of your division?

Citizens of Alabama

Contact Information:

Phone: (205) 325-5342

Fax: (205) 325-5690

E-mail: lmj0020@aces.edu

Website: aces.edu



Agency Name:

Jefferson County Development Services Department's Stormwater Program

Mission Statement:

The Jefferson County Development Services Department's Stormwater Program is responsible for preventing and investigating pollution that may enter the County's municipal separate storm sewer system (MS4), thereby improving water quality in the waterways of Jefferson County. To maximize program efficiency, the Development Services Department's Stormwater Program utilizes a broad approach which includes interdepartmental collaboration to ensure Jefferson County is meeting federal and state regulations in order to reduce the amount of stormwater pollution flowing into and through local rivers, creeks, lakes and streams. Protecting water quality in Jefferson County waterways is an important factor in the safety and health of residents.



What services does your agency provide?

Jefferson County Development Services Department's Stormwater Program is responsible for implementing the following activities within unincorporated areas of Jefferson County:

- Sampling and monitoring waterways according to NPDES Permit guidelines
- Issuing land disturbance activity permits for residential and commercial construction projects
- Providing a Hotline 205-325-5792 for residents to report suspected water pollution

- Investigating water pollution and construction site complaints
- Implementing a public education and outreach component which includes providing materials and support for community roadside litter cleanups; presentations for schools, communities, and businesses; workshops, trainings and seminars for residents; informative publications and materials at public events; and displaying educational posters
- Preparing and submitting an annual report to the Alabama Department of Environmental Management

Who benefits from the programs and services of your division?

Unincorporated Jefferson County Residents

Contact Information:

Phone: (205) 325-8741

Fax: (205) 325-5743

E-mail: lyn.diclemente@jccal.org

Website: jeffconline.jccal.org



Agency Name:

Jefferson County Department of Health Watershed Protection Program

Mission Statement:

The mission of the JCDH Watershed Protection Program is to promote and protect the health, safety, and welfare of the public by protecting and enhancing the water quality of the members of Storm Water Management Authority, Inc. The following members' cities are served by the program to meet the Environmental Protection Agency's (EPA) requirements for storm water compliance.



- | | | | |
|----------------|--------------|------------------|--------------|
| • Adamsville | • Pinson | • Mountain Brook | • Midfield |
| • Center Point | • Brighton | • Pleasant Grove | • Tarrant |
| • Gardendale | • Clay | • Brookside | • Trussville |
| • Hueytown | • Graysville | • Fairfield | |
| • Lipscomb | • Irondale | • Homewood | |
| • Mulga | • Maytown | • Vestavia Hills | |

What services does your agency provide?

- Conduct water sampling to monitor prohibited pollutant discharges from entering a storm drain or stream
- Conduct public educational activities and presentations on watershed protection
- Analyze water samples to identify 'Hot Spots'
- Map high-risk areas in order to develop long term strategies
- Monitor residential and commercial construction sites for proper erosion control

Who benefits from the programs and services of your division?

Residents of SWMA member cities have an opportunity to protect streams and rivers by calling the JCDH WPP Storm Water Hotline number (205) 930-1999, to report pollution in surface waters. To learn how your school or civic organization can receive education material on upcoming community events or interested in having a speaker present to your group please visit the website below for additional information.

Contact Information:

Address: 1400 6th Avenue South, Birmingham, AL 35233

Phone: (205) 930-1230

Fax: (205) 939-3019

Website: jcdh.org



Agency Name:

UAB Recycling

Mission Statement:

UAB is committed to continuously reducing waste and increasing recycling on campus.

What services does your agency provide?

UAB offers a Drop-Off Center (D.O.C.) primarily for UAB students, staff, & alumni but unofficially for anyone. It is open for use Mon. – Fri., 24 hrs a day.

Materials accepted include:

- Paper (use the totes with lids)
- Cardboard (use the open hopper, break down boxes)
- Plastic bottles/cups/food containers (#1 & #2 ONLY)
- Aluminum Cans (beer, soda, energy drinks)
- Steel Cans (food, soup, veggie)
- Used Cooking Oil – gallon containers provided in the white storage shed.
- Electronics (Some limitations apply. Check www.uab.edu/recycle, and e-mail recycle@uab.edu to schedule a visit. There is no bin for electronics with the other materials; it is in a restricted area.)



Who benefits from the programs and services of your division?

The UAB campus is the main beneficiary, but the Recycling Program also partners with UAB Hospital, Kirklin Clinic, Innovation Depot, Children's Hospital, Viva Health, the Health Sciences Foundation, and are open to partnering with other UAB-related entities. The general public also benefits via the UAB Drop-Off Center.

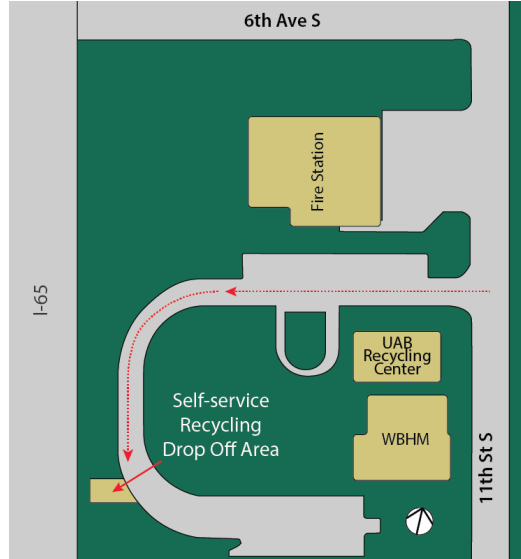
Contact Information:

Phone: (205) 996-9043 (forwards to Dispatch for recycling requests on campus)

Fax: (205) 996-4801

E-mail: recycle@uab.edu

Website: uab.edu/recycle



Agency Name:

Freshwater Land Trust

Mission Statement:

The Freshwater Land Trust conserves, connects, and cares for lands and waters in Central Alabama, creating dynamic green spaces for future generations.



freshwater
LAND TRUST

What services does your agency provide?

Since 1996, we have worked to conserve areas that are critical for the protection of rivers and habitats and that provide recreational opportunities for local communities.

- **Conserve:** We own almost 5,000 acres of land, making us one of the largest owners of private nature preserves in Alabama, and we have helped protect over 11,000 acres of land in our short seventeen year history.
- **Care for:** We actively manage our land in order to keep our waters clean and our ecosystems healthy.
- **Connect:** We partner with local communities to identify and develop outdoor recreational opportunities that meet their unique needs. One of our signature projects is the Red Rock Trail System, a network of trails, parks, bike lanes, and sidewalks in Jefferson County.



Who benefits from the programs and services of your division?

We work in Bibb, Blount, Chilton, Jefferson, Shelby, St. Clair, Walker, and Tuscaloosa counties and are proud to partner with governments, corporations, landowners, and community groups.

Contact Information:

Jeffrey Drummond

Director of Stewardship Programs

Address: 2308 1st Ave North, Birmingham, AL 35203

Phone: (205) 417-2777

Website: www.freshwaterlandtrust.org

E-mail: jeffrey.drummond@freshwaterlandtrust.org



Resource Directory

Libraries

<http://www.bplonline.org/>

Soil Testing

University of Alabama Safe State

[http://alabamasafestate.ua.edu/environmental-consultation/
environmental-field-services.php](http://alabamasafestate.ua.edu/environmental-consultation/environmental-field-services.php)

Alabama Cooperative Extension Systems

<http://www.aces.edu/anr/soillab/>

Environmental

Jefferson County Department of Health

www.jcdh.org

Parks and Trails

www.reachforbetterhealth.com/parksrx

Recycling

Environmental Protection Agency-Surf Your Watershed

<https://cfpub.epa.gov/surf/locate/index.cfm>

Environmental Protection Agency -Reduce, Reuse, Recycle

<https://www.epa.gov/recycle>

Environmental Protection Agency-Electronics Donation and Recycling

<https://www.epa.gov/recycle/electronics-donation-and-recycling#where>

Alabama Environmental Council

<http://www.aeonline.org/recycling/where>

***Disclaimer:** Check with your local municipality or county agency for updates on resource topics listed above for changes.*

Notes

[illegible]

Notes

[illegible]

[illegible]

Notes

This image shows a blank sheet of white paper with horizontal ruling lines. The lines are evenly spaced and run across the width of the page. There are no margins, text, or other markings on the paper.

Notes

[illegible]

Notes

[illegible]

Notes

[illegible]



Electronic Version Available at www.jcdh.org

Jefferson County Environmental Community Resource Booklet